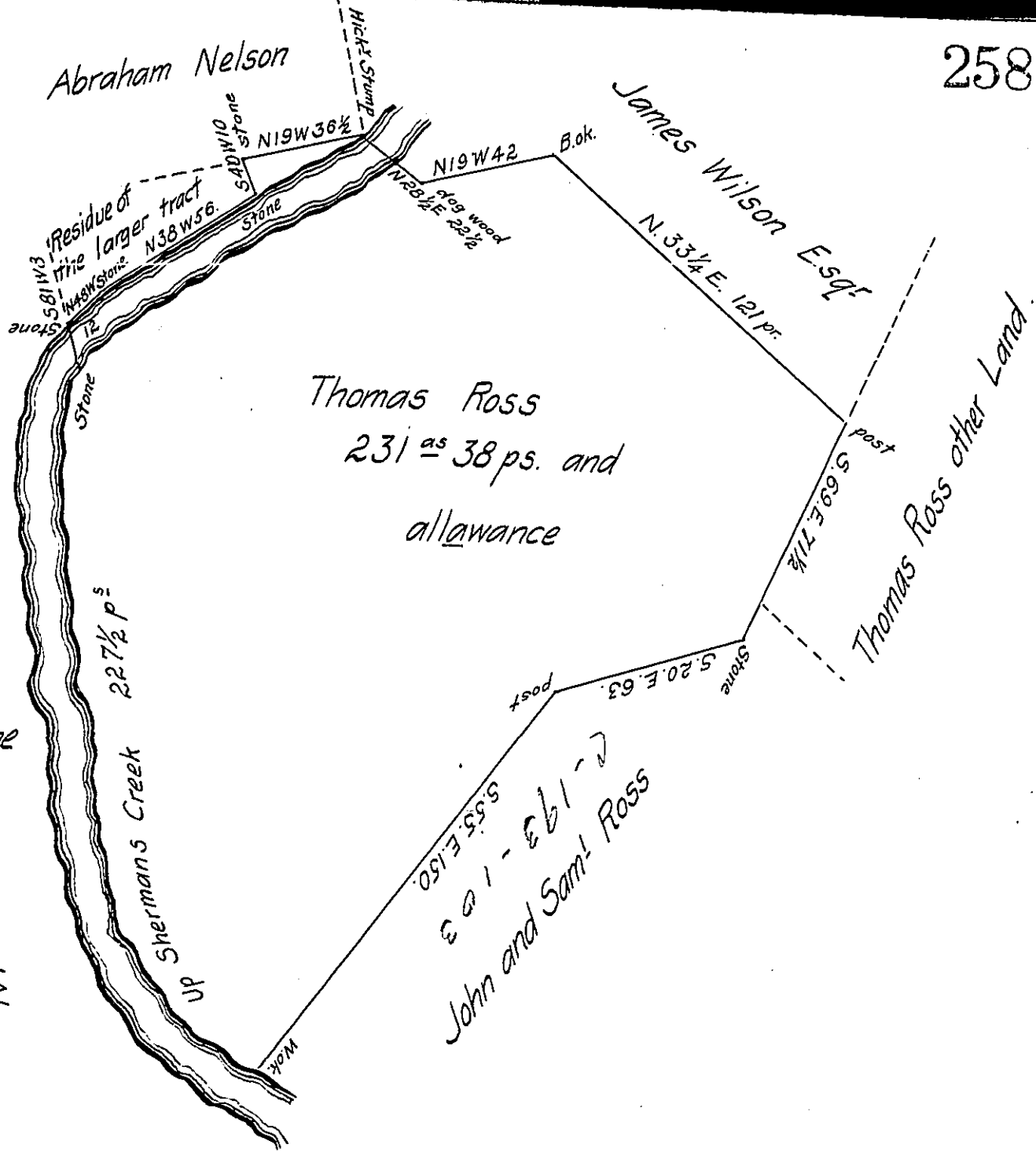


Courses and distances up Shermans Creek, from the W.ok.

- S. 35. W. 35 1/2
- S. 55. W. 20 3/4
- S. 68. W. 17 1/2
- S. 85. W. 43
- S. 71. W. 35 3/4
- S. 83. W. 28
- S. 67 1/2. W. 18 1/2
- S. 88. W. 20.4
- N. 63. W. 8.

227 1/2 p^s Stone



A Draught of a Tract of Land Situate in Tyrone Township Cumberland County Containing 231 as 38 p^s and the usual allowance of six per Cent for Roads &c. It being part of a Larger tract of 238 1/2 as and allowance originally Surveyed to Thomas Ross in pursuance of a warrant dated the 1st day of June 1762. Resurveyed the 30th day of May 1806 agreeable to an order of Resurvey of the Board of Property dated the 3^d day of February 1806.

W^m Wheeler D.S.

To Samuel Cochran Esq^r S.G.

IN TESTIMONY that the above is a copy of the original remaining on file in the Department of Internal Affairs of Pennsylvania, made conformably to an Act of Assembly approved the 16th day of February, 1833, I have hereunto set my Hand and caused the Seal of said Department to be affixed at Harrisburg, this eighth day of October 1906.

Isaac D. Brown
Secretary of Internal Affairs.